

ASSEMBLY INSTRUCTIONS

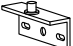
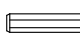



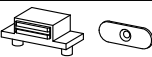


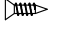

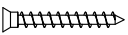

383-000002

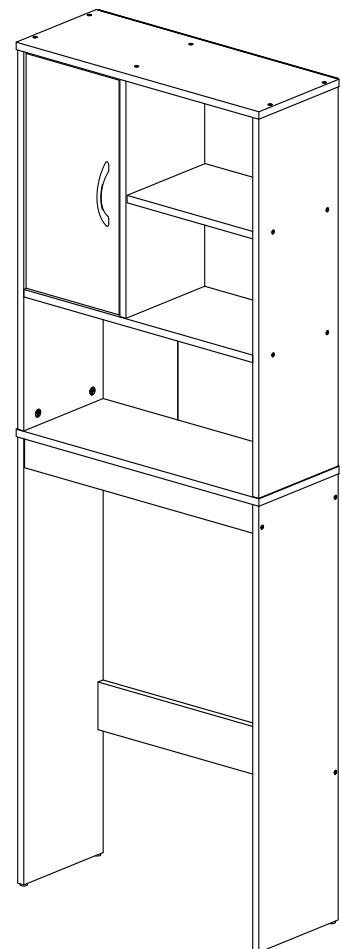


IMPORTANT

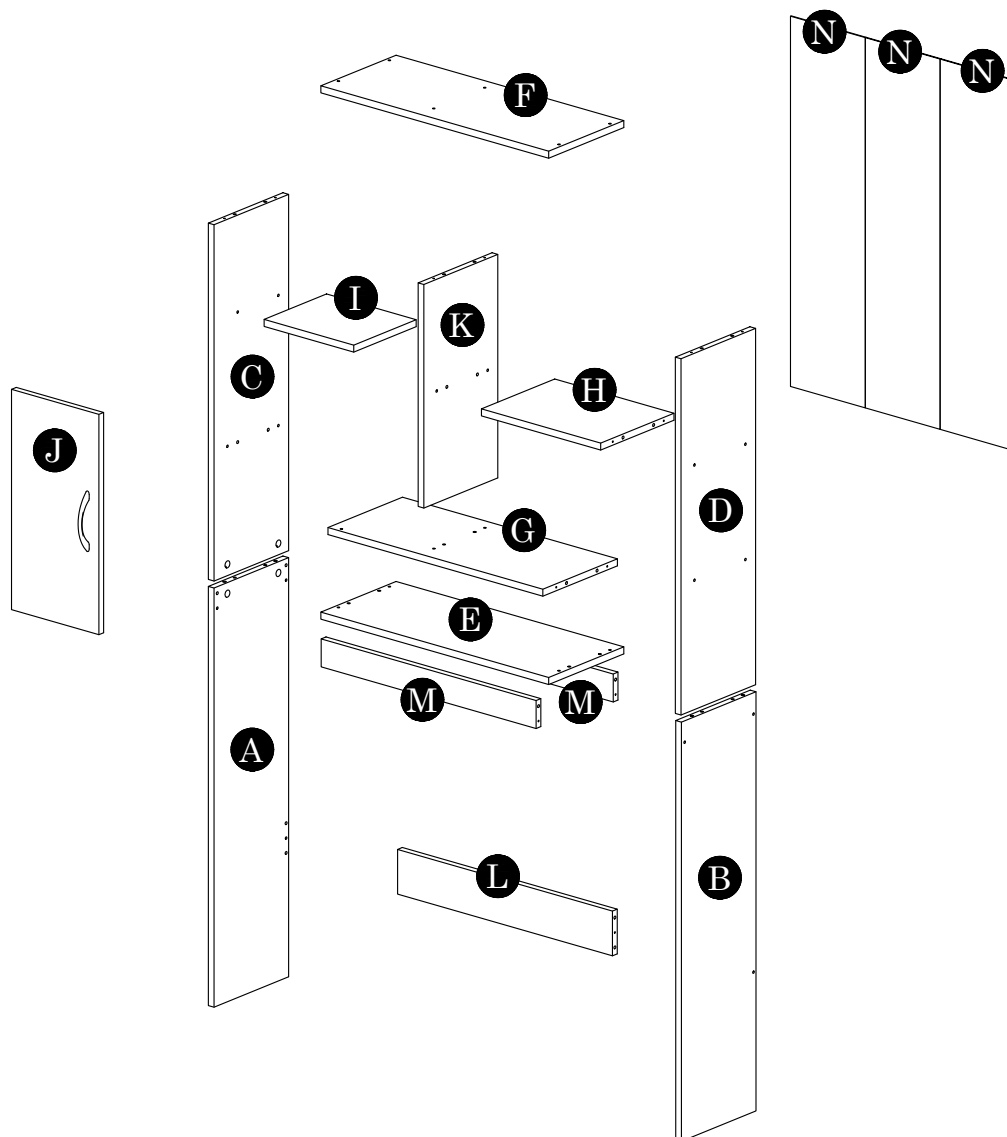
PLEASE READ BEFORE YOU CONTINUE FURTHER

1. MATERIAL USE LAMINATED PARTICLE BOARD, TO CLEAN USE SOFT, DRY CLOTH.
2. DO NOT USE DETERGENT OR CHEMICAL AVOID CONTACT WITH WATER AND DIRECT SUNLIGHT.
3. TO BE ASSEMBLED ON A SOFT, DRY, CLEAN SMOOTH SURFACE.
4. DO NOT USE ANY TOOLS OTHER THAN THOSE SHOWN.
5. USE OF POWER TOOLS TO ASSEMBLE THIS PRODUCT WILL INVALIDATE ANY CLAIM AND MAY DAMAGE THIS PRODUCT MAKING IT UNSAFE.
6. BEFORE STARTING ASSEMBLY PLEASE VERIFY IF ALL PARTS AND HARDWARE ARE INCLUDED.

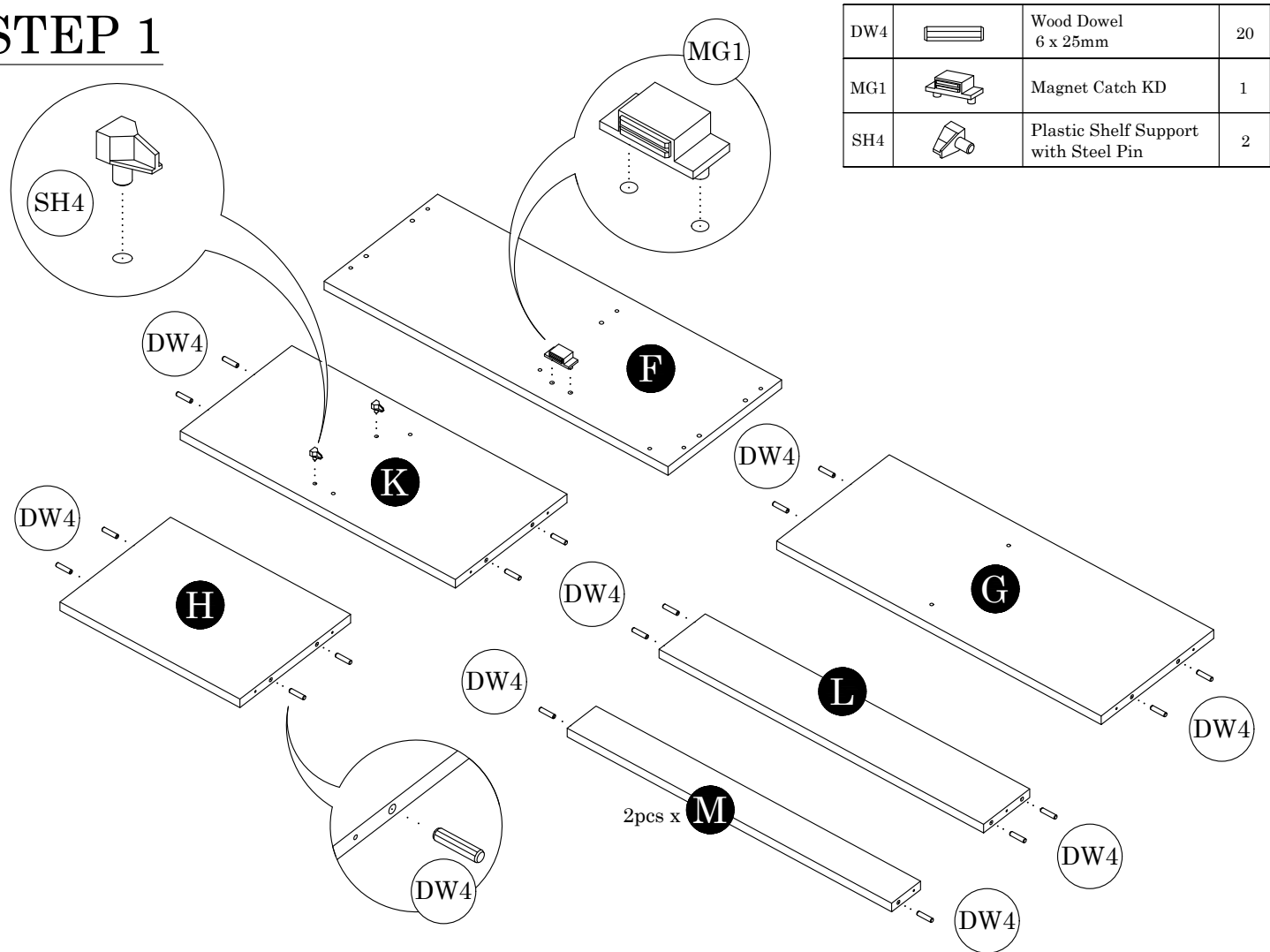
HARDWARE LIST			QTY (pcs)
DH3		Door Holder	2
DW4		Wood Dowel 6 x 25mm	32
HD3		Handle 96mm	1
LG1		Leg Pin	4
MF2		Nail	20 (+3)
MG1		Magnet Catch KD	1 Set
MN2		Mini Fix 15mm	8 Sets
PF11		Small L Bracket	2
SC3		Screw M3.5 x 14mm	9
SC11		Screw M4 x 25mm	2
SC25		FH Screw M5 x 40mm	22
SH4		Plastic Shelf Support with Steel Pin	4



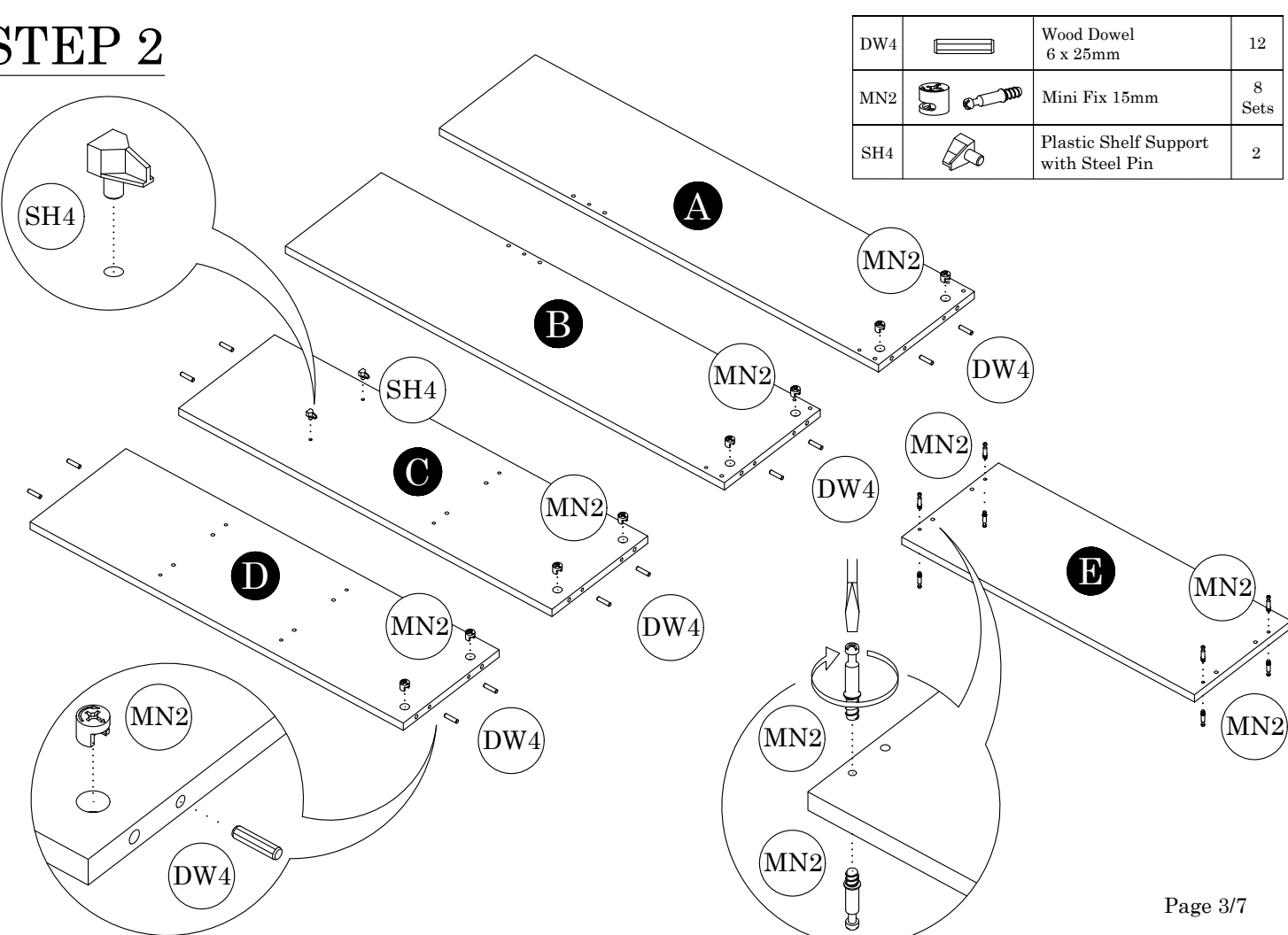
Parts List		QTY
A	Big Side Panel (L)	1 pc
B	Big Side Panel (R)	1 pc
C	Side Panel (L)	1 pc
D	Side Panel (R)	1 pc
E	Top Panel	1 pc
F	Upper Top Panel	1 pc
G	Big Shelf Panel	1 pc
H	Shelf Panel	1 pc
I	Small Shelf Panel	1 pc
J	Door Panel	1 pc
K	Center Panel	1 pc
L	Big Crossbar	1 pc
M	Crossbar Panel	2 pcs
N	Backboard	3 pcs



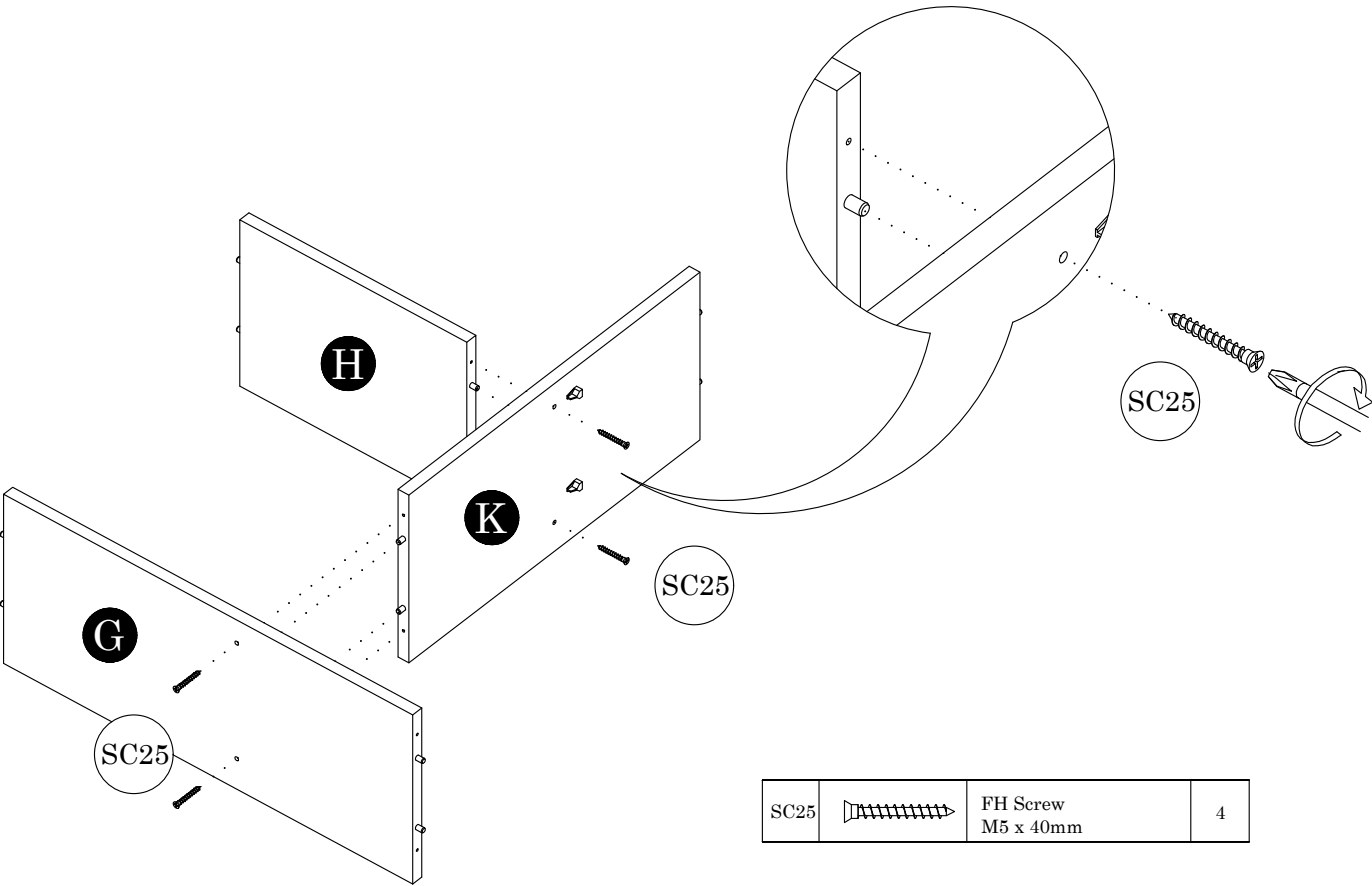
STEP 1



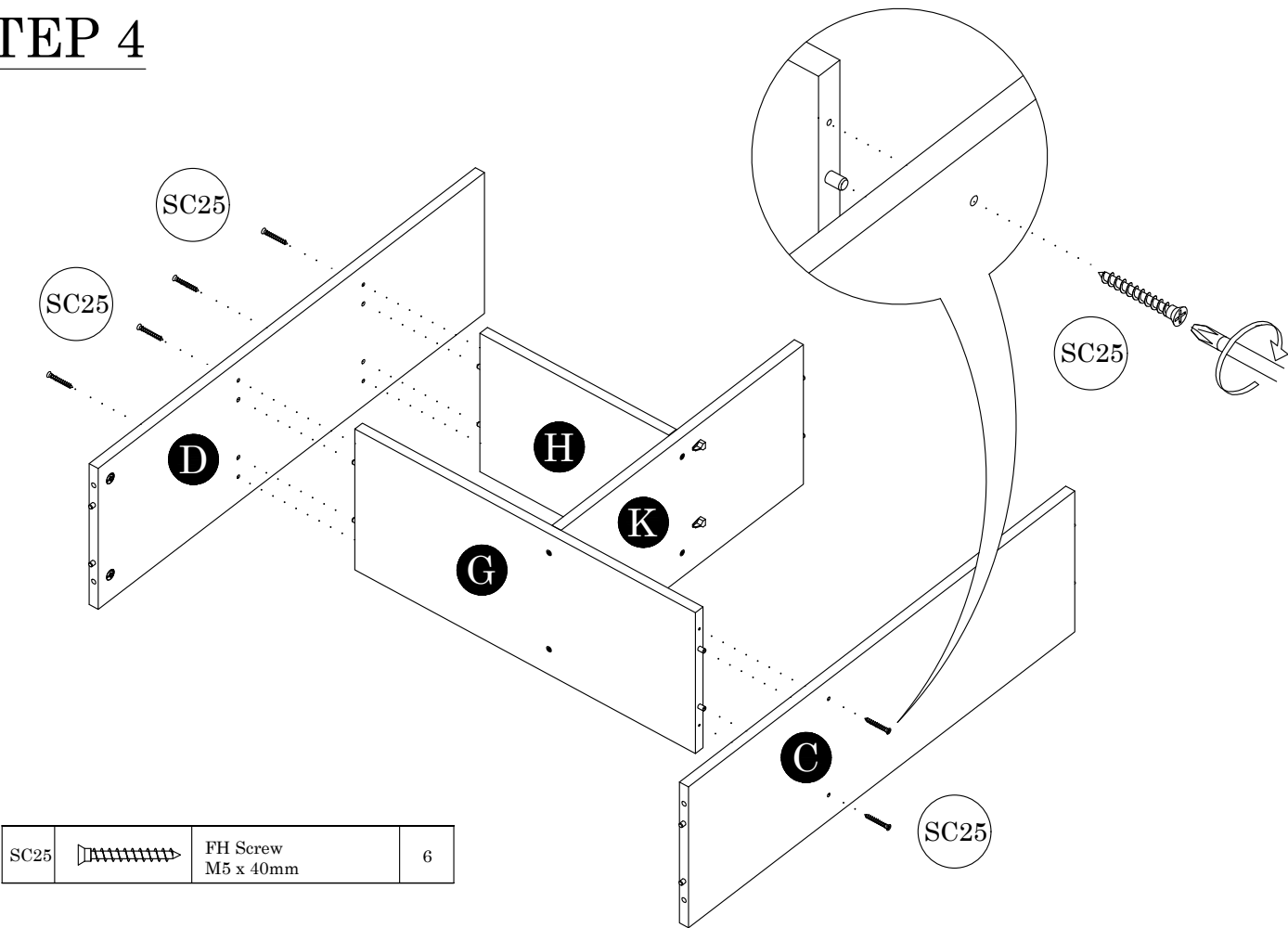
STEP 2



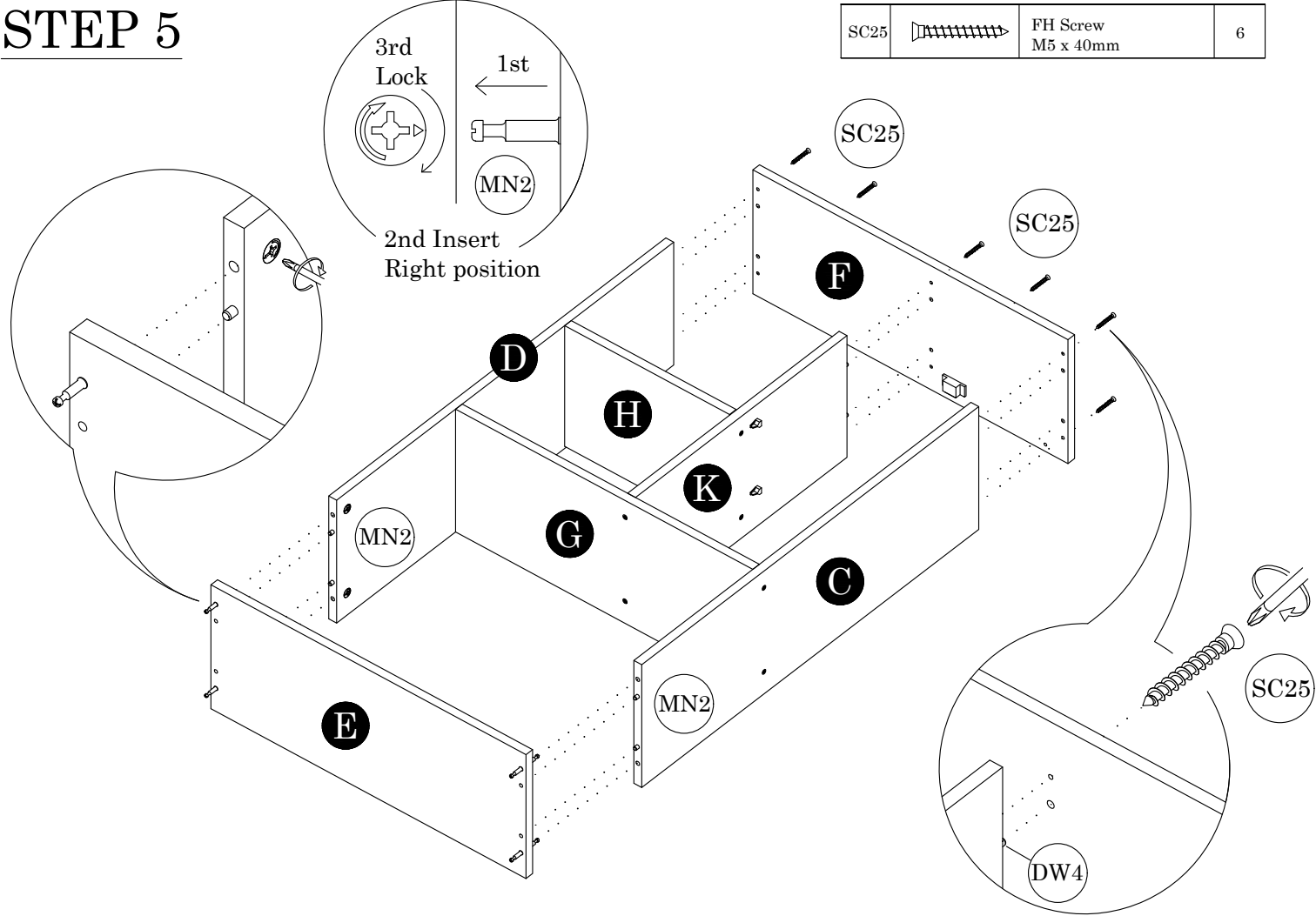
STEP 3



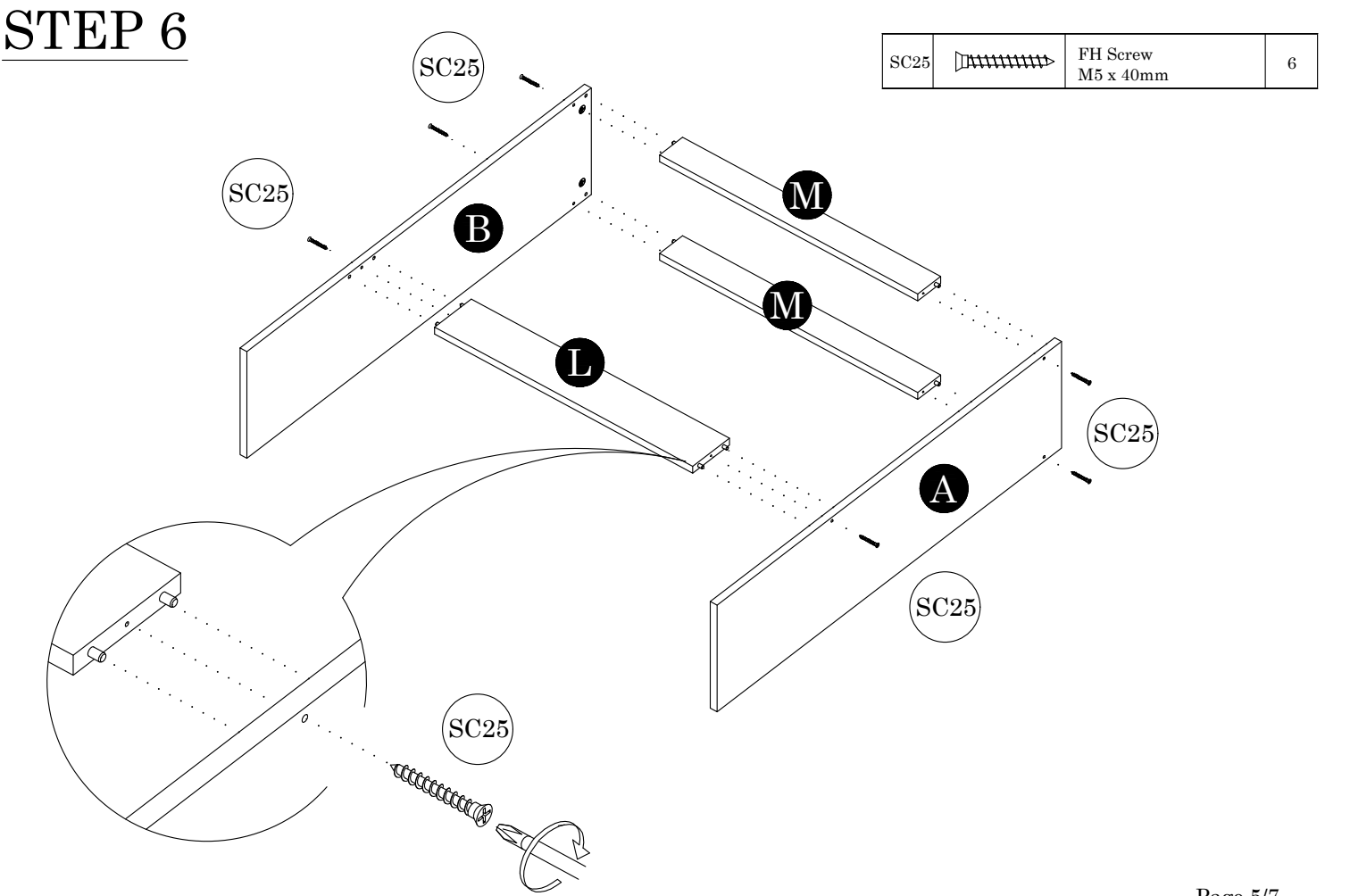
STEP 4



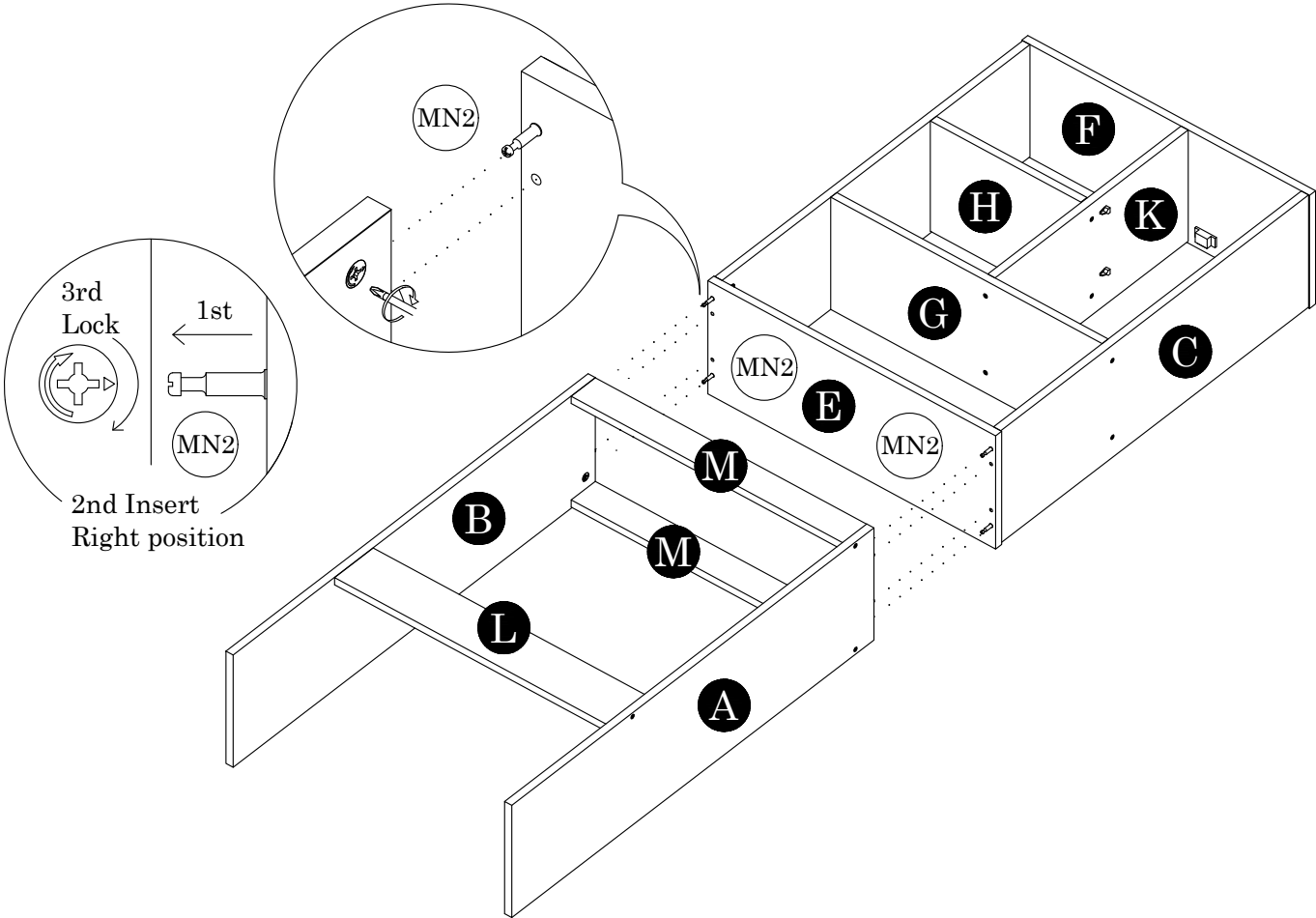
STEP 5



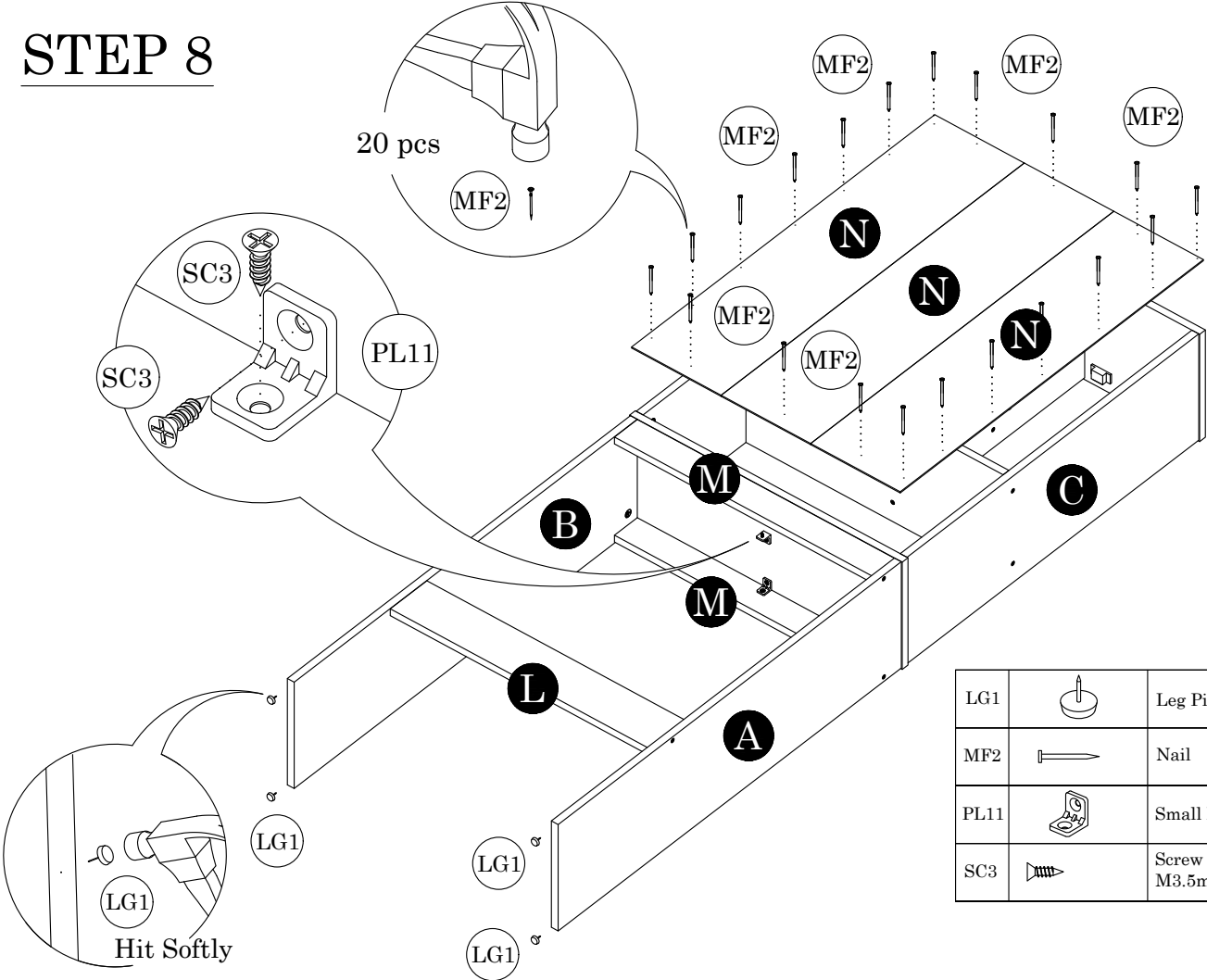
STEP 6



STEP 7



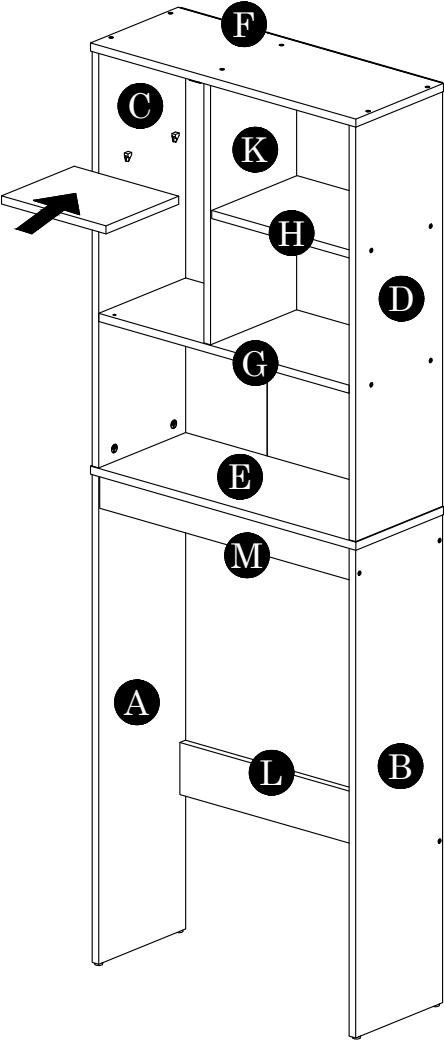
STEP 8



LG1		Leg Pin	4
MF2		Nail	20 (+3)
PL11		Small L Bracket	2
SC3		Screw M3.5mm x 14mm	4

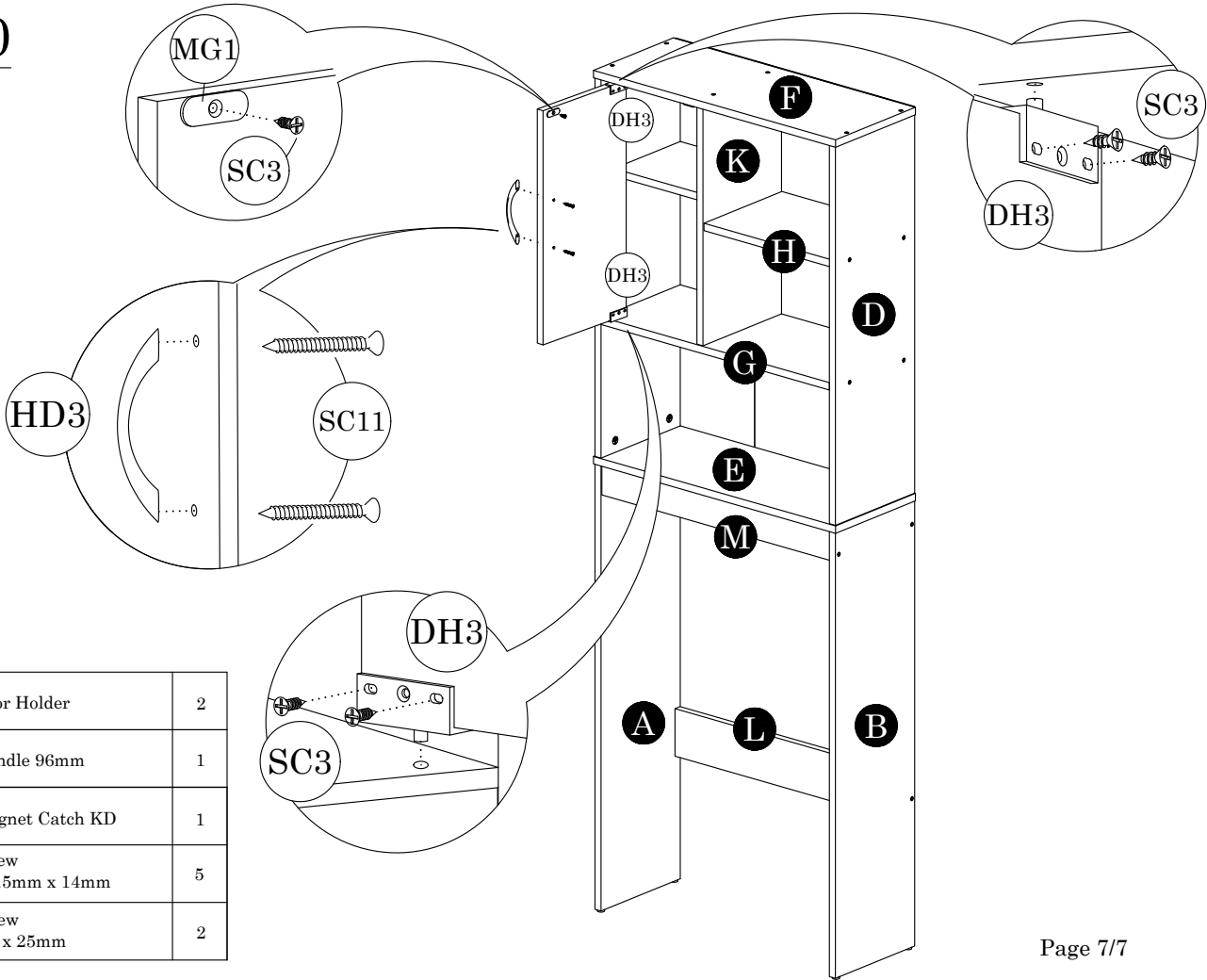
STEP 9

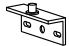




Insert 1pc
small shelf panel



Stand
up

STEP 10



DH3		Door Holder	2
HD3		Handle 96mm	1
MG1		Magnet Catch KD	1
SC3		Screw M3.5mm x 14mm	5
SC11		Screw M4 x 25mm	2